

تقرير السياسة النقدية للبنك المركزي العراقي

2011

Monetary policy report
Central Bank of Iraq
Third quarter 2011

Statistics & research department
[Http://www.cbi.iq](http://www.cbi.iq)

3			
5-4	.		-
6-5		.	-
6		.	-
7			-
7	.	()	-
8		.	-
9		.	-
10		.	-
11		.	-

2011

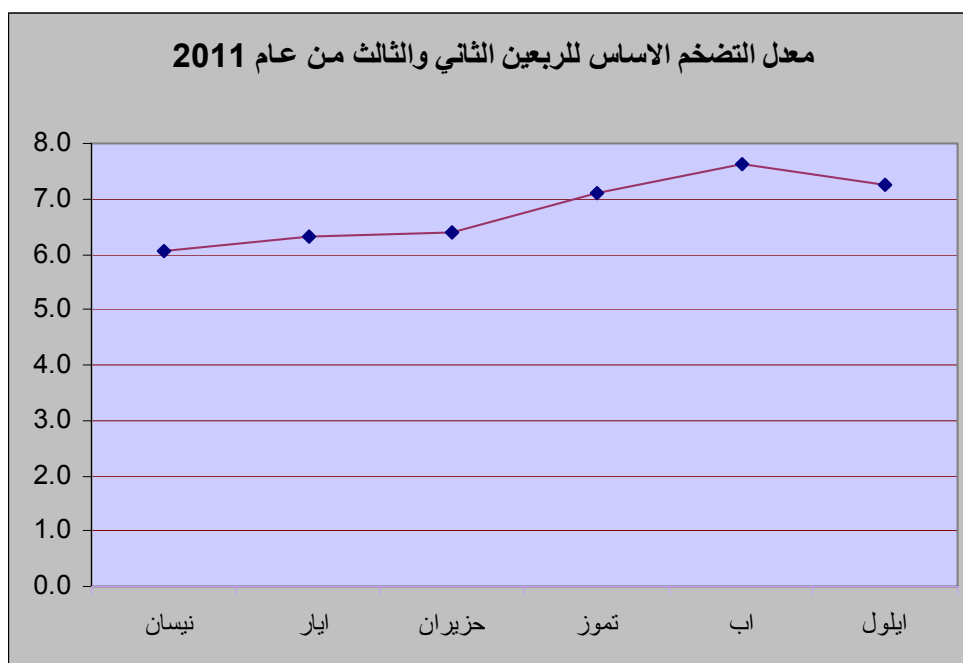
()

(policy rate)

2011 (7.3%)

(1).

(15.9%)



2011 (132.3)

(1.2%)

(130.7)

(5.5%)

(6.7%)

2010

(16.8%)

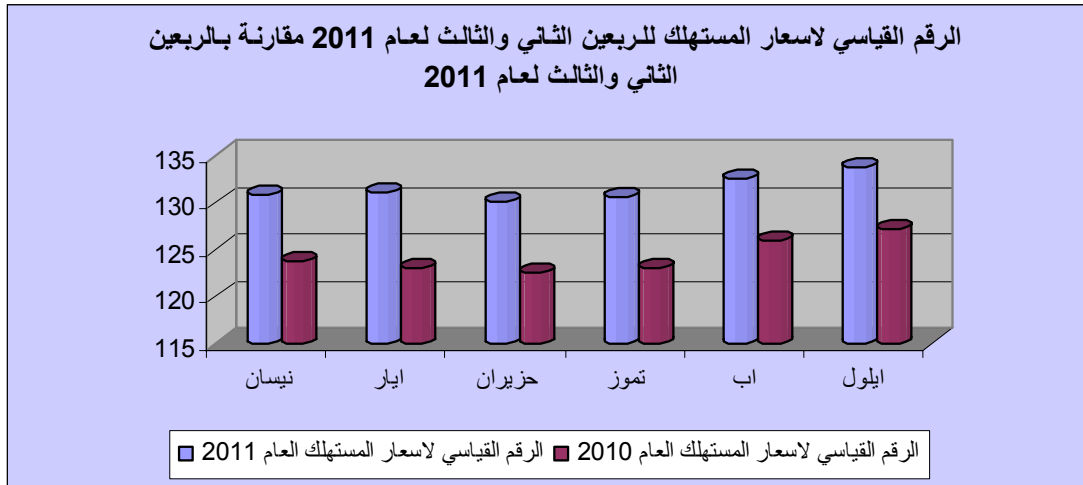
(100%)

(3%)

(2.0% 2.3% 2.5%)

()

), } } (%8.7)
 { ((%1.1 %1.5 %1.7)
 (% 12.3) ()
 (%31.3) () (%100)
 .(2) (%0.1)

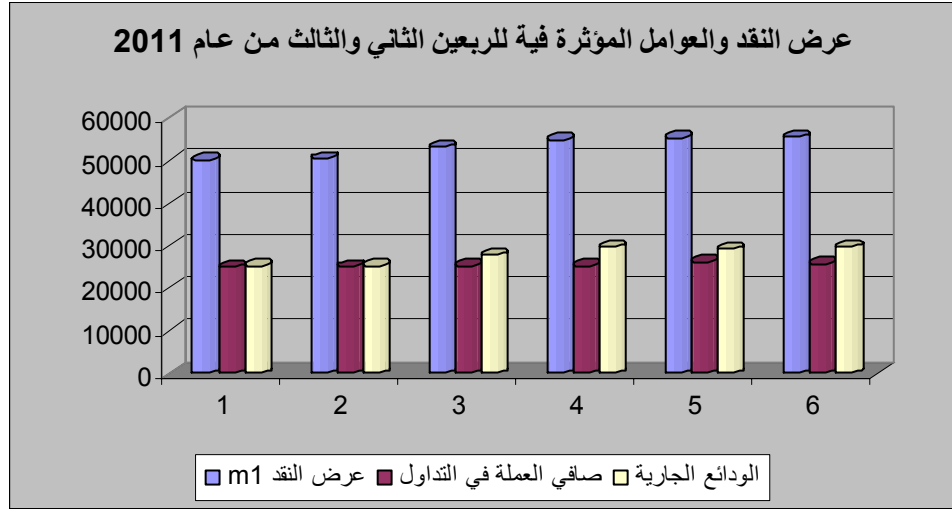


(3)
 2011 (55.5) M1
 (%53.4) (%46.6)
 (53.2) (%4.4)
 (%47.6) (%52.4)
 (65.1) M2
 (62.3) (%4.5)
 (%45.5) (%14.6)

(%6.5)

(%2)

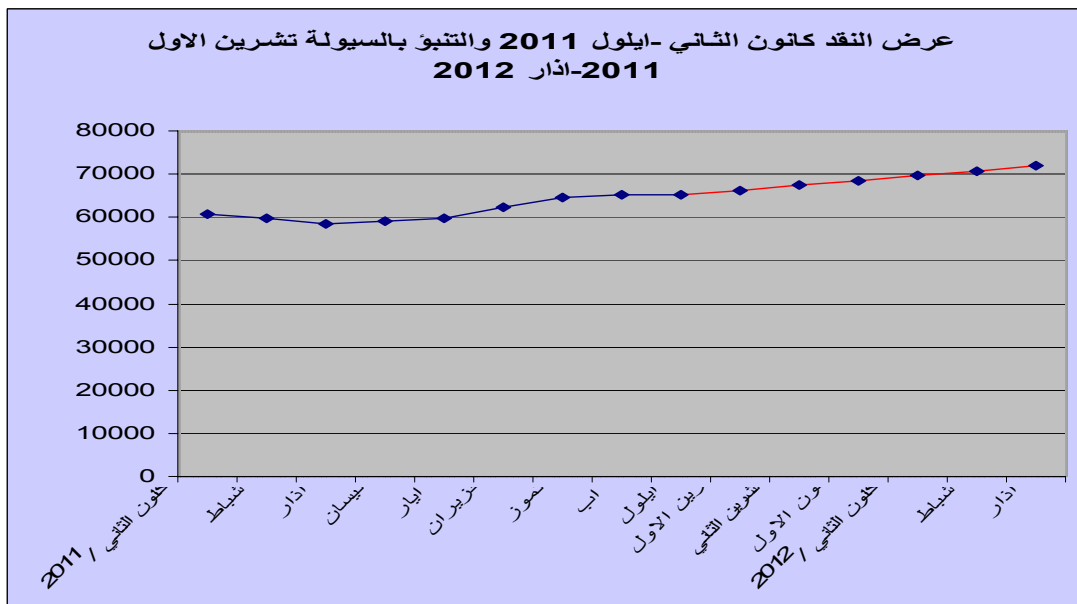
(M2) (%39.7)



M2

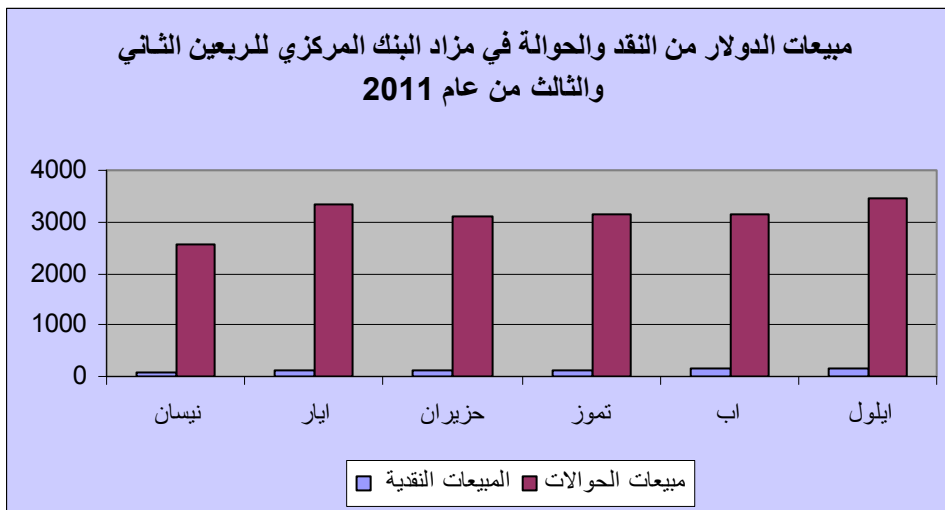
(M2)

(4)



) (1170)
 (1200) (13)
 ()

(5)
 2011
 (%8.7) (9.3) (10.1) 2011
 (9.7) (168.6)
 (0.4) (%96.1)
 (14) (16.9) 2011
 (2.9)
 (14)



	(%6)	(Policy Rate)	
		2010/4/1	
(6)		(%4)	
2011			(1301)
		.(%37.2)	(948)

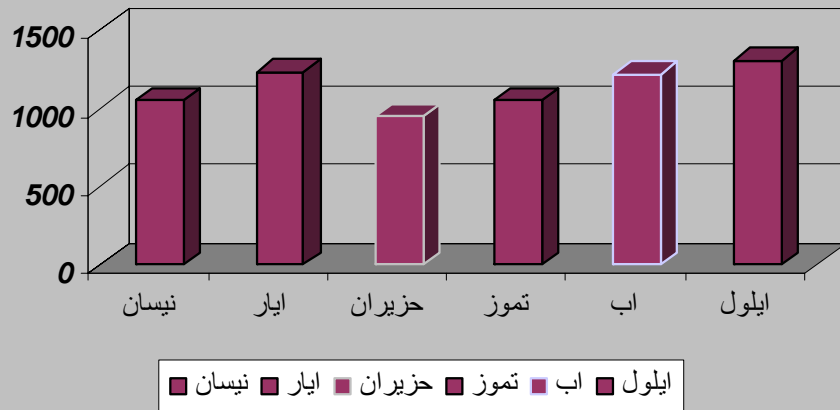
2004/

()

-:

.	%8	-
.	%9	-
.	%9.5	-

الایداعات القائمة بالدينار العراقي لمدة 7 ايام للربعين الثاني والثالث
من عام 2011



(% 15)

. 2010/9/1

(7)

(5059)

(5018)

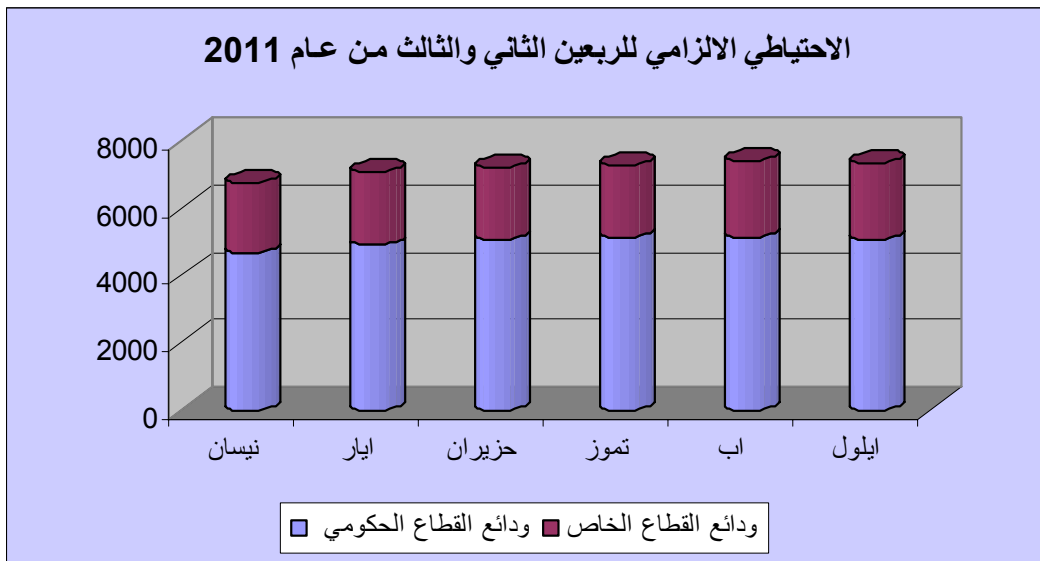
(%0.8)

(2279)

2011

. (%7.0)

(2130)



		(8)	
(HY33-HY30)	2011		(182)
(150)			(200)
(%9.1)		(696)	
(%1.4)	(706)		
		(%8.7)	
(91)			
2011			
	(100)	(C43-C37)	
	(600)	(C40)	
(600)			(%7.4)
		(% 7.5)	
		(600)	2010

(1)

2011

2010

%	*2011	2011	*2010	2010	
6.1	131.1	131	123.6	123.8	
6.3	131.5	131.1	123.7	123.0	
6.4	131.6	130.1	123.7	122.6	
6.3	131.4	130.7	123.7	123.1	
7.1	132.9	130.6	124.1	123.0	
7.6	134.3	132.6	124.8	126.0	
7.3	134.6	133.8	125.5	127.3	
7.3	133.9	132.3	124.8	125.4	

/ :

بعد استبعاد فقرتي الوقود ومجموعتي الفواكه والخضار

*

(2)

2011

2010

		2011/				2011/				2010 /					
		3				2				1					
3/2	3/1														
0.4	1.2	137.4	142	137.4	133.3	137	134.6	138	137.9	135.8	141.1	137.8	128.5	30.06	
1.1	7.1	128.8	129	128.5	128.8	127	128.8	128.4	125	120.3	119.2	120.4	121.3	0.72	
2.5	3.1	128.1	129	129.3	126	125	125	124.7	125.3	124.2	124.4	124.3	123.8	7.33	
1.5	12.3	141.2	141	141.3	141.2	139	138.7	139.2	139.5	125.7	125.8	125.8	125.4	31.31	
0.8	2.0	116.7	117	116.7	116.4	116	116.2	115.8	115.4	114.4	114.8	114.2	114.1	6.377	
2.0	8.7	150.3	152	149.8	149.4	147	148.4	148.4	145.5	138.3	139.9	137.7	137.3	2.308	
-0.1	-2.4	109.3	109	109.7	109.1	109	109.1	109.2	109.8	112.0	112.1	112.3	111.7	11.09	
-0.1	0.3	86.5	86.5	86.4	86.7	86.6	86.6	86.4	86.7	86.2	88.0	84.9	85.6	2.926	
0.0	-2.0	106.2	106	106.2	106.3	106	106.2	106	106.3	108.4	108.6	108.2	108.3	1.619	
2.3	8.6	140.6	141	140.5	139.8	138	139.7	136.5	136.3	129.5	129.5	129.5	129.4	0.989	
1.7	7.1	134.0	135	134	132.5	132	131.8	131.8	131.6	125.1	126.0	125.1	124.3	1.403	
6.7	16.8	153.4	156	156.6	147.5	144	146.2	144.3	141	131.3	132.7	131.0	130.3	3.878	
1.2	5.5	132.3	134	132.6	130.6	131	130.1	131.1	131	125.4	127.3	126.0	123.0	100	

/ :

(3)

2011

			M2	M1	
8856	25323	24987	59265	50310	
9009	25298	25197	59602	50495	
9039	27853	25331	62322	53184	
9337	29642	25358	64439	55000	
9545	29169	26308	65125	55478	
9503	29656	25849	65111	55505	

:/

(4)

2011 - 2010/ m2
2011
2012

M2	
46211	2010/
47666	
49264	
51224	
53051	
55851	
55873	
56388	
56214	
57299	
58201	
60396	كانون الاول
60809	2011/
59740	
58453	
59265	
59602	
62322	
64439	
65125	
65111	
66218	
67343	
68487	
69651	2012/
70835	
72039	

2011

(5)

5000		5000	2641	2578	63	
5000		5000	3450	3332	118	
4000		4000	3231	3119	112	
14000		14000	9322	9029	293	
3000		3000	3252	3132	120	
8900	2900	6000	3277	3140	137	
5000		5000	3600	3458	142	
16900	2900	14000	10129	9730	399	

(6)

2011

1051	
1231	
948	
1044	
1216	
1301	

l:

(7)

2011

2090	4642	
2163	4875	
2130	5059	
2119	5106	
2277	5126	
2279	5018	

/:

(8)

2011

(182)

(91)

182				91			
%				%			
8.6	145000	200000	1	7.5	200020	100000	2
8.9	306000	200000	3	7.5	200010	100000	2
8.7	255000	200000	2	7.5	200000	100000	2
8.7*	706000		6	7.5*	600030		6
8.9	389120	200000	2	7.5	200000	100000	2
8.9	156500	200000	1	7.5	200020	100000	2
9.4	150000	150000	1	7.2	200020	100000	2
9.1*	695620		4	7.4*	600040		6

معدل بيع القطع