

تقرير السياسة النقدية للبنك المركزي العراقي

2012

Monetary policy report
Central Bank of Iraq
Second quarter 2012

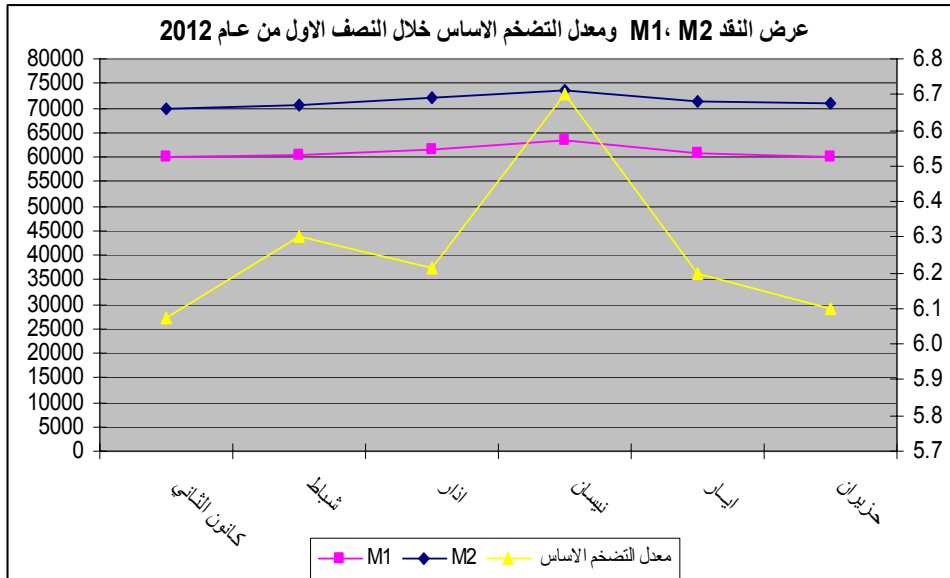
Statistics & research department
[Http://www.cbi.iq](http://www.cbi.iq)

2012

2012

-:

(60.1)	M1	-
(%2.5)		(61.6)
(%1.7)	(70.8) M2	
(%1.6)	(%6.3)	-
(140.2)		
(%1.0)		(138.9)
		(%7.3)



(1166)

(1241)

(10.7)

(%5.9)

(10.1)

(0.5)

(10.2)

(162.4)

(18)

.(%111.8) (8.5)

(%6) (Policy Rate) -

(%4)

(3156) 2012

(3173)

(%0.5)

(%15) -

(5087)

(2823)

(150) (91) -

(100) (182)

: 2012 **GSRS**

182	91	
300	900	
271	900	
() %5	() %4.9	

(3.99) (100)

2012/6/30 (40.34)

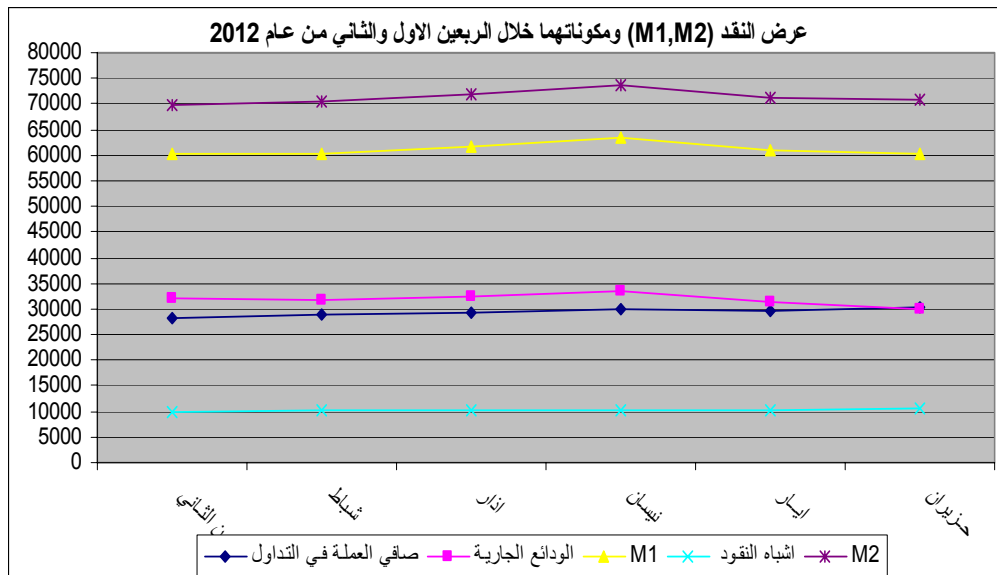
2010/10/26



2		-
3		-
4 - 3		-
5 - 4		-
6	.()	-
7 - 6		-
8 - 7		-
9 - 8		-
10		-

2012

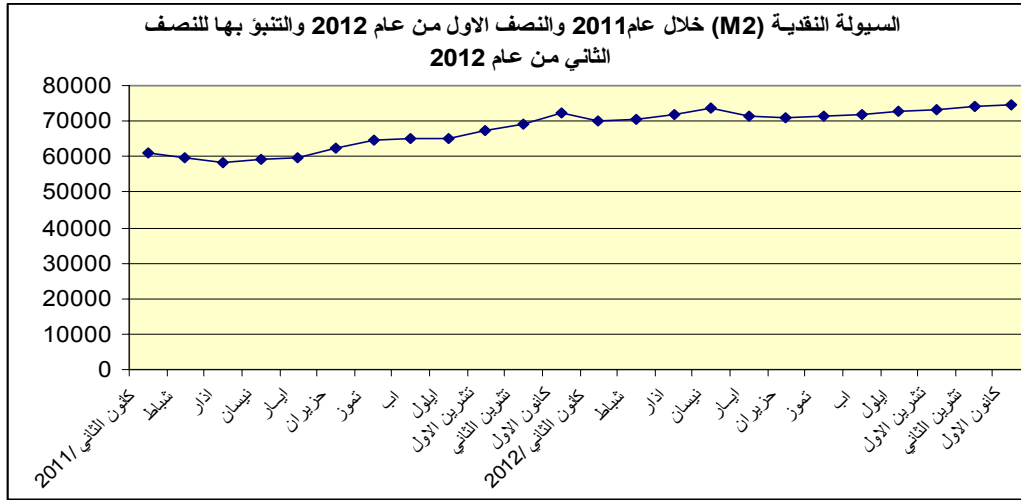
	(2)	
2012	(60.1) M1	
(%49.7)	(%50.3)	
	(%2.5)	
(%47.3)		(61.6)
		(%52.7)
	(70.8) M2	
(72.0)	(%1.7)	
(%42.2)	(%15.1)	
		(%42.7) (M2)



M2

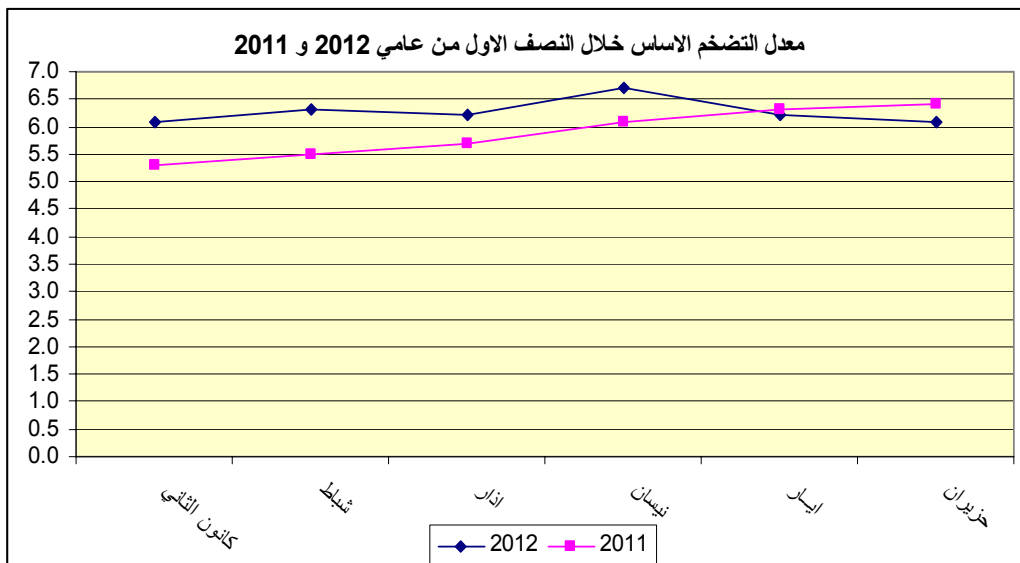
(M2)

(3)

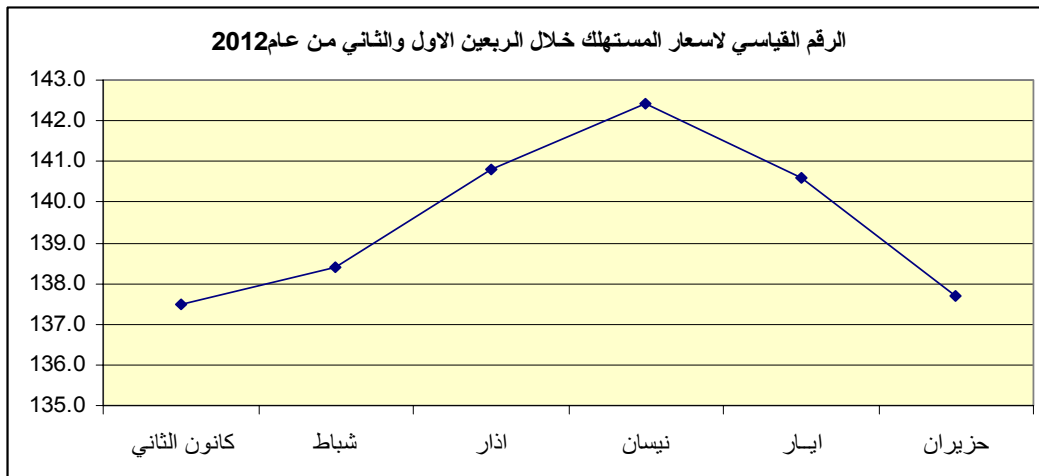


(%6.3) 2012

(%1.6)



(140.2) 2012
 (%1.0) 2012 (138.9)
 () (%7.3)
 (%9.8) 2012 (%2.1)
 (%31.3)
 (%7.0) (%2.0)
 ()
 2012 %(1.0 1.2)
 %(6.8 6.5)
 :
)
 %(0.1 0.4 0.5 0.9) ()
 ()
 .(1) %(0.7 0.3 0.2 0.1)



()

(1166) 2012

13)

(

(1263)

(1241)

(10.7) 2012

(%5.9)

(10.1)

(10.2)

(162.4)

(0.5)

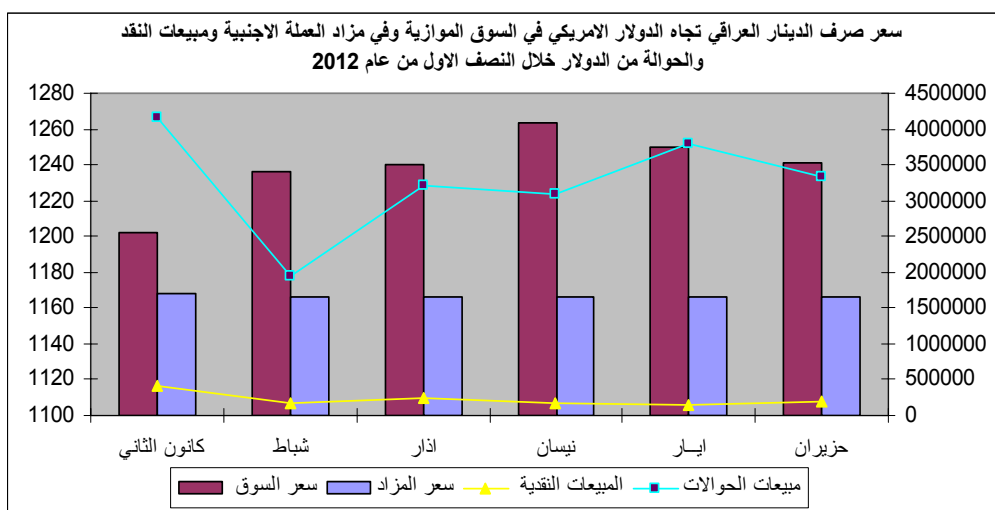
(%95.3)

(18) 2012

(4)

(%111.8)

(8.5)



(%6) (Policy Rate)

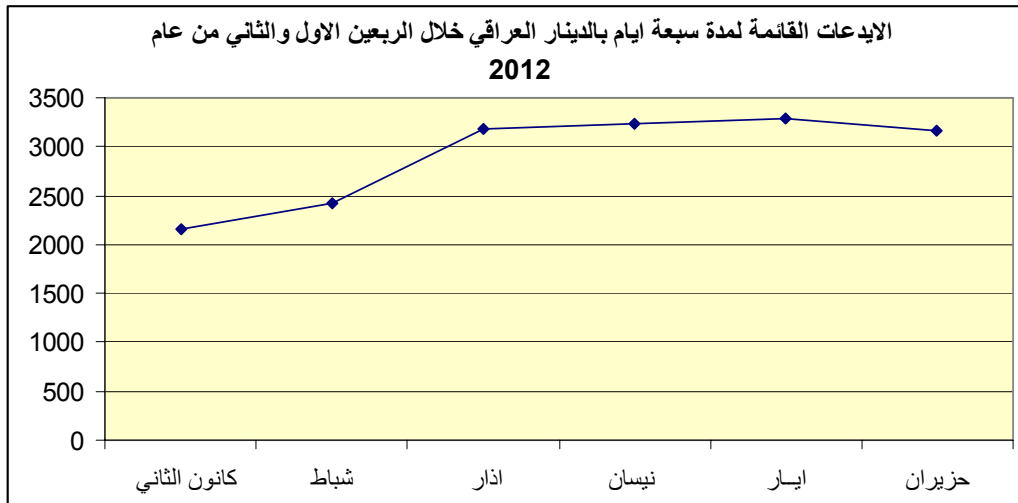
(5) (4%)
 (3156) 2012
 (3173)

(%0.5)

%8

%9

%9.5



(%15)

(%5)

(%10)

.2010/9/1

(6)

(5066)

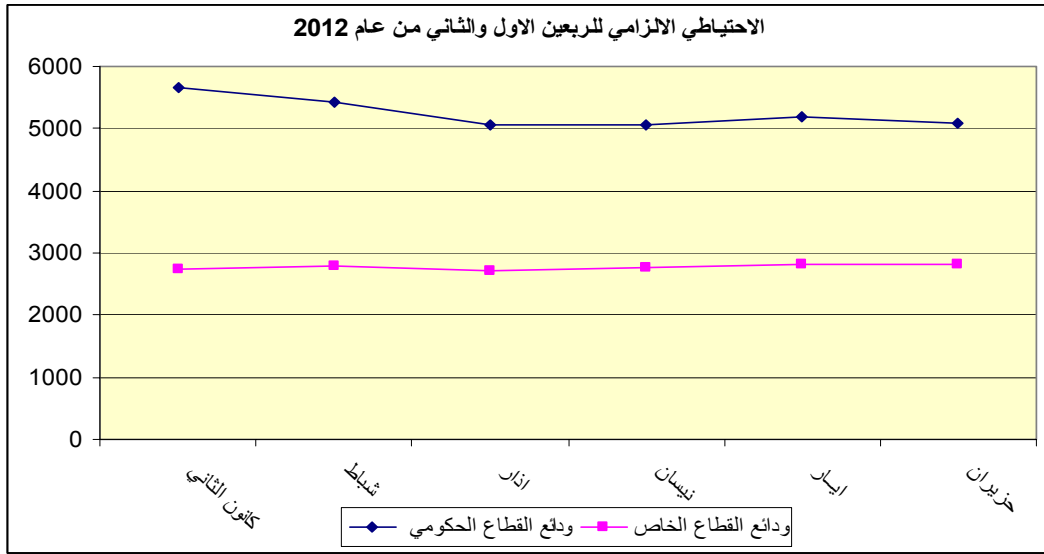
(5087)

(%0.4)

(2706)

(2823)

.(%4.3)



				-
	2012			-
GSRs		(100)	(182)	
			(7)	
	-:			
		(300)		-
		(271)		-
	2011			
			(%5)	-
				-
	2012			-
GSRs		(150)	(91)	
			(8)	
	-:			
		(900)		-

(900)

-

.2012

(%4.9)

-

2010/10/26

(3.99)

(100)

.2012/6/30

(40.34)

(1)

M2		M1			
69887	9773	60114	32076	28038	
70470	10078	60392	31568	28824	
72028	10387	61641	32500	29141	
73626	10350	63276	33473	29803	
71239	10373	60866	31266	29600	
70781	10662	60119	29873	30246	*

(KFI)

:

*

(2)

/ - /

m2

M2	
60809	/
59740	
58453	
59265	
59602	
62322	
64439	
65125	
65111	
67148	
68973	
72320	
69887	/
70470	
72028	
73626	
71239	
70781	
71416	
72051	
72686	
73321	
73956	
74591	

(3)

		/				/				/					
		3				2				1					
0.4	9.0	149.2	140.8	150.6	156.2	148.7	154.6	146.6	144.8	136.8	134.6	138.0	137.9	30.059	
-0.3	2.6	130.7	131.7	130.4	129.9	131.1	130.6	131.4	131.2	127.4	128.8	128.4	125.0	0.720	
0.9	7.8	134.7	134.8	134.8	134.5	133.5	134.2	133.3	133.1	125.0	125.0	124.7	125.3	7.330	
2.1	9.8	152.8	152.6	152.9	153.0	149.7	149.7	149.8	149.6	139.1	138.7	139.2	139.5	31.305	
0.5	2.5	118.7	118.9	118.8	118.5	118.1	118.4	118.2	117.7	115.8	116.2	115.8	115.4	6.377	
1.2	6.5	157.1	157.6	157.3	156.3	155.2	155.7	155.3	154.6	147.4	148.4	148.4	145.5	2.308	
0.1	-2.2	107.0	106.9	107.0	107.1	106.9	106.8	106.9	107.0	109.4	109.1	109.2	109.8	11.086	
-0.7	-3.3	83.7	83.7	83.8	83.7	84.3	84.0	84.2	84.7	86.6	86.6	86.4	86.7	2.926	
-0.2	-0.8	105.4	105.3	105.4	105.4	105.6	105.6	105.6	105.5	106.2	106.2	106.0	106.3	1.619	
2.0	7.0	147.1	150.3	146.7	144.3	144.2	144.3	144.2	144.1	137.5	139.7	136.5	136.3	0.989	
1.0	6.8	140.7	140.7	140.7	140.7	139.3	140.3	139.0	138.6	131.7	131.8	131.8	131.6	1.403	
-0.1	8.8	156.5	156.0	155.8	157.7	156.7	157.2	158.6	154.3	143.8	146.2	144.3	141.0	3.878	
1.0	7.3	140.2	137.7	140.6	142.4	138.9	140.8	138.4	137.5	130.7	130.1	131.1	131.0	100	
		6.3	6.1	6.2	6.7	6.2	6.2	6.3	6.1	6.3	6.4	6.3	6.1		*

/ :

* بعد استبعاد فترتي الوقود ومجموعتي الفواكة والخضر

(4)

4000000	4579195	4157945	421250	1168	1202	
2500000	2123977	1953790	170187	1166	1236	
2000000	3445973	3214043	231930	1166	1240	
8500000	10149145	9325778	823367	1167	1226	
5000000	3246291	3087753	158538	1166	1263	
4000000	3939623	3790785	148838	1166	1250	
9000000	3531927	3342122	189805	1166	1241	
18000000	10717841	10220660	497181	1166	1251	

(5)

2150	
2419	
3173	
3238	
3296	
3156	

:

(6)

2739	5656	
2795	5421	
2706	5066	
2778	5052	
2806	5196	
2823	5087	*

:

*

