

2011

Monetary policy report
Central Bank of Iraq
First quarter 2011

Statistics & research department
[Http://www.cbi.iq](http://www.cbi.iq)

3		-
4	.	-
5		-
6	.	-
7	.()	-
8	.	-
9	.	-
10	.	-

56

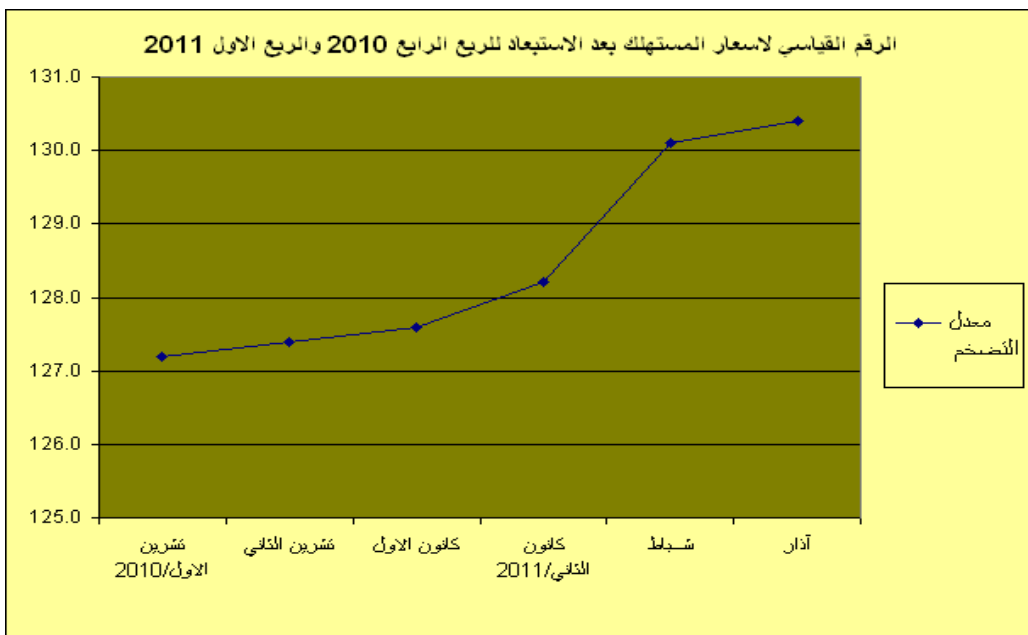
2004

()

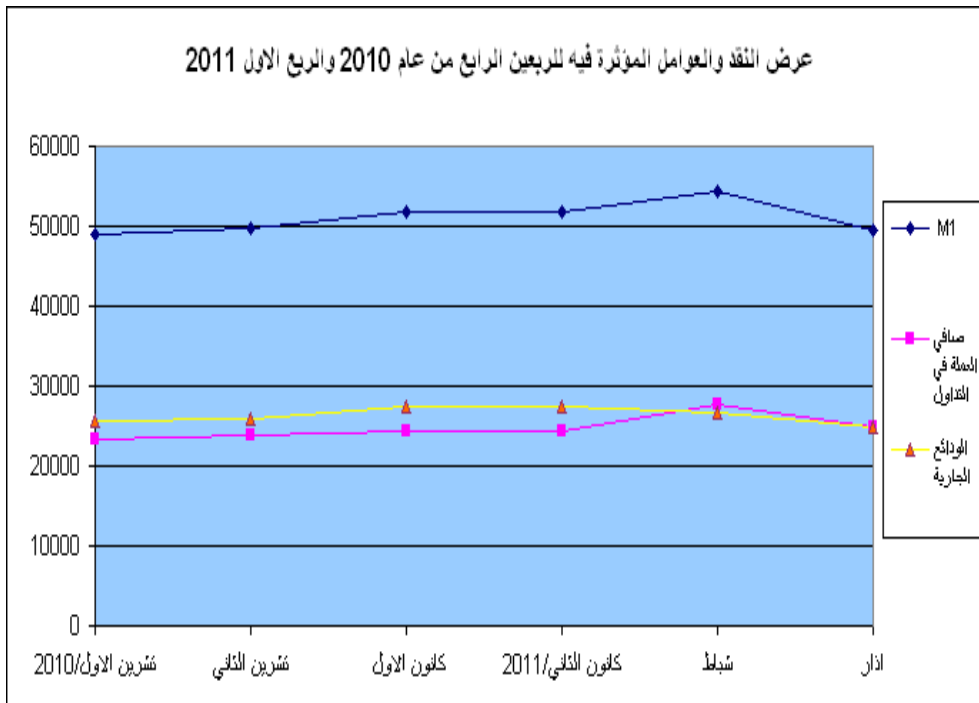
2011

} 2011
)
)
 ({ ((%1.7)
 .(1)
 (2)
 (128.1) (129.9) 2011
 (%1.4) 2010
 (%4.3) ()
 %1.6 (%3.2)
 %1.3
 () (%0.1)

{ ()
) } (%0.3 %0.7 %0.9)
 . (%0.1) { (



		(3)	
		(49.6)	M1
	(%49.9)		2011
	(%4.2)		(%50.1)
		(51.8)	
		(%53)	(%47)
	(58.5)	M2	
(60.3)	2010	(%3.0)	
	(%2.8)	(%15)	
	(% 42.5)		
	2010	(% 9.5)	
		(% 42.3)	
		(%1.7)	

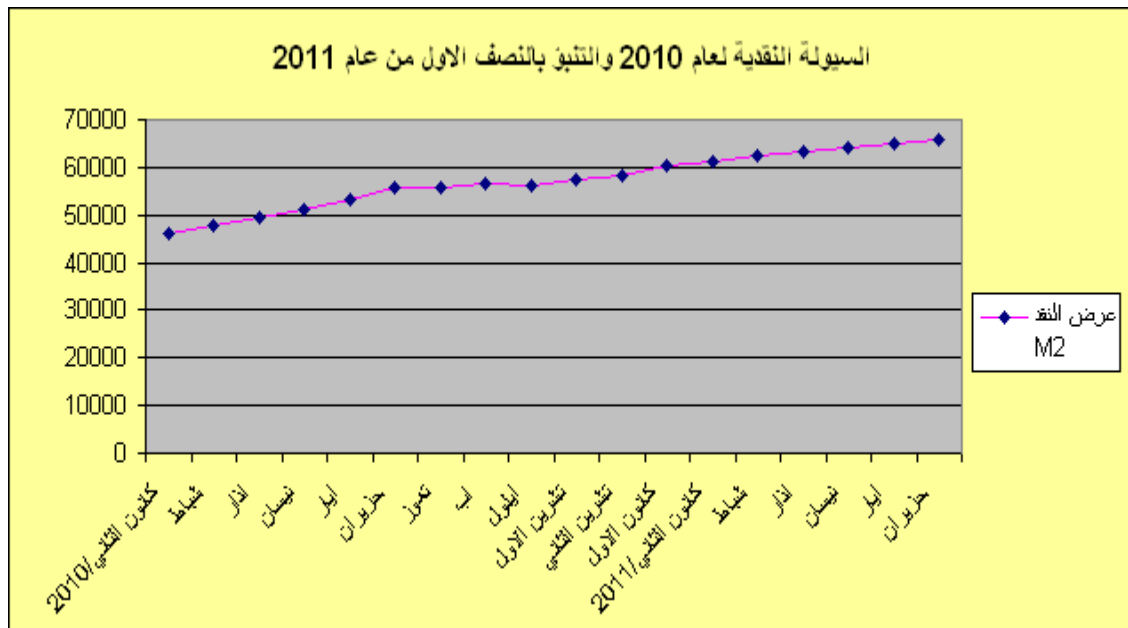


M2

2010 (M2) 2011
(2.3) 2011 (%3.8)
2011 (%7.4)

2011

(4)



()

(1170)

(5)

2011

.2010

(%2.4)

(9341)

2011

(%99)

(9234)

2010

2011

(9040)

(107)

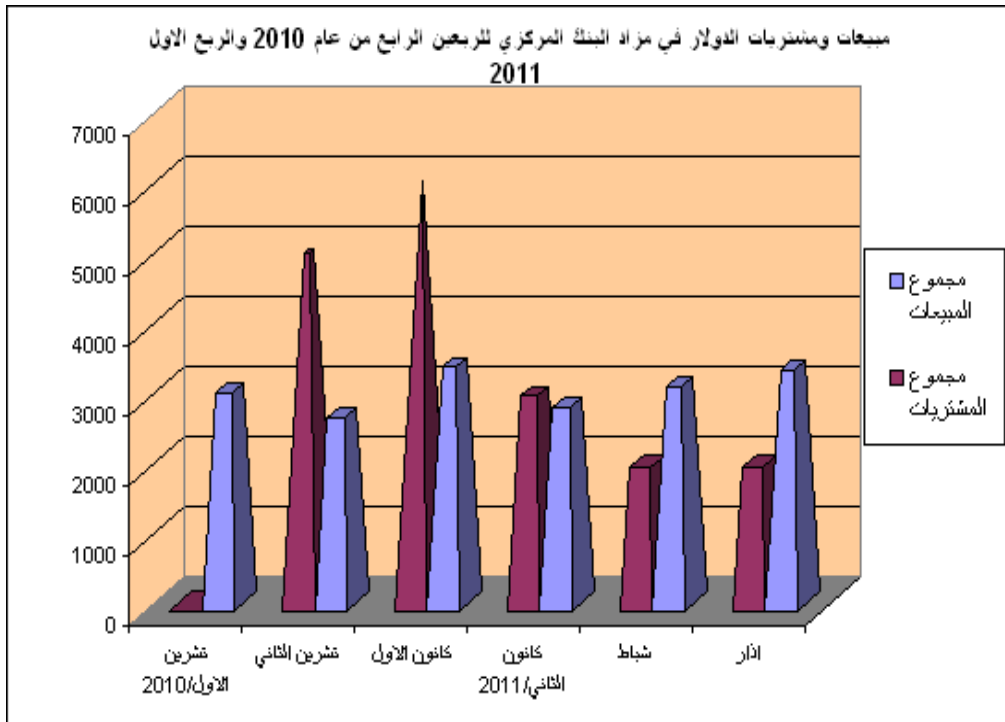
2010

(86)

(7000)

(11002)

. (%36.4)



(%6) (Policy Rate)

2010

(%4)

(6)

(1913)

2011

(1066)

2010

.(%79)

2004/

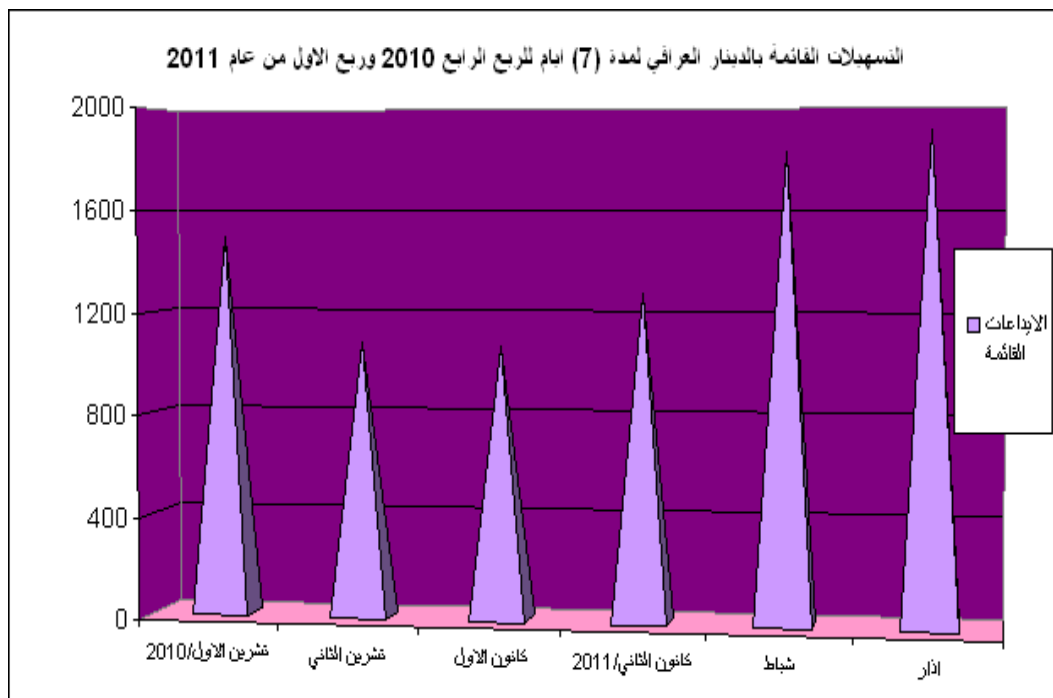
()

-:

%8

%9

%9.5



(% 15)

(7)

(4935)

(4750) 2011

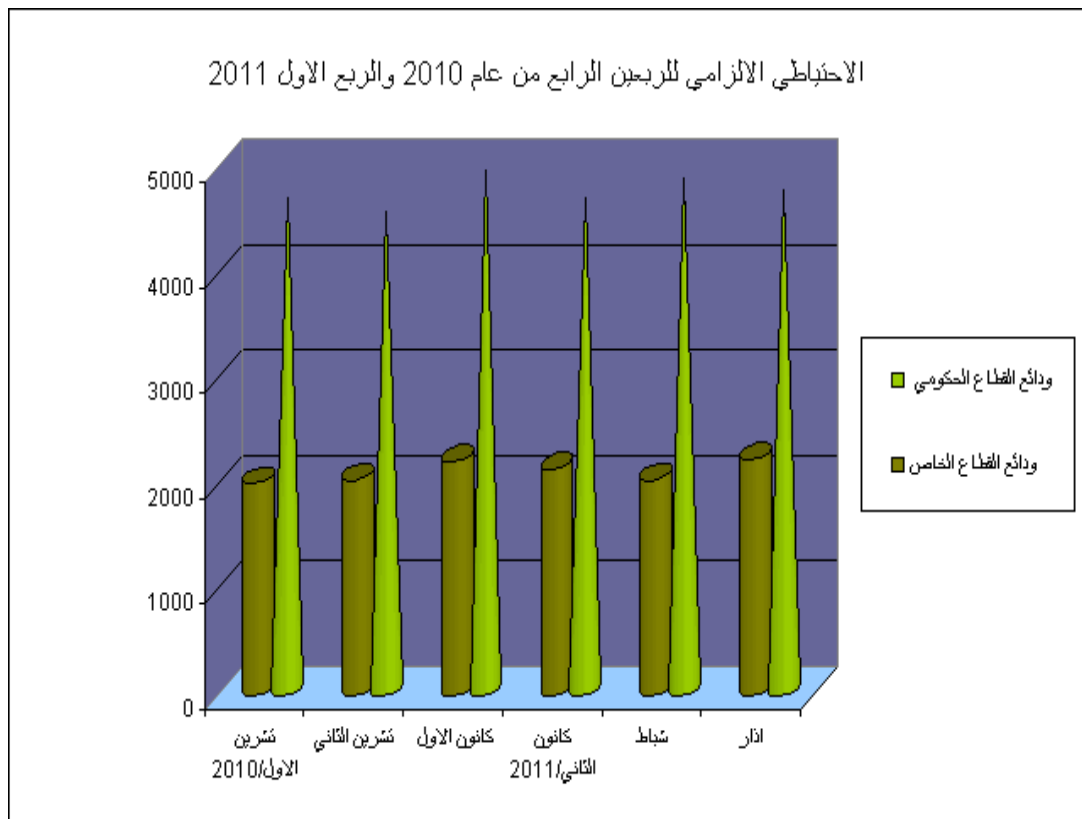
(%3.7)

2010

(2243)

. (%1)

(2221)



	(182)		
		2011	
	150		(HY22-HY18)
)	604		643
(2010	
			. %(8.19)
	(91)		
		(100)	
	(C30-C24)		
)	400		700
(2010	
			.(7.00)

(1)

2011

2010

127.2	تشرين الاول/2010
127.4	تشرين الثاني
127.6	كانون الاول
127.4	
128.2	2011/
130.1	
130.4	
129.6	

(2)

2011

2010

%	2011				2010				
				2011/				2010/	
-0.1	138.8	136.6	140.5	139.3	138.9	138.3	139.5	138.9	
0.0	123.6	123.7	123.5	123.5	123.6	124.0	123.7	123.2	
-0.1	122.7	123.0	122.2	123.0	122.8	122.6	122.5	123.2	
4.3	136.0	138.2	137.8	132.0	130.4	130.3	130.5	130.4	
0.1	115.2	115.2	115.3	115.2	115.1	115.5	115.1	114.8	
1.3	142.9	143.7	142.6	142.3	141.1	141.7	141.1	140.5	
-0.7	110.8	110.7	110.6	111.1	111.6	111.2	111.2	112.3	
-0.3	86.8	86.7	86.7	87.0	87.1	87.0	87.6	86.7	
-0.9	107.1	106.8	107.1	107.5	108.1	107.7	108.0	108.6	
3.2	134.6	135.3	134.9	133.6	130.4	132.0	129.6	129.5	
1.6	130.7	131.0	131.2	129.9	128.6	129.5	128.8	127.6	
1.3	137.7	138.3	137.4	137.4	135.9	136.9	136.0	134.9	
1.4	129.9	130.0	130.9	128.8	128.1	127.9	128.3	128.1	

(3)

2011 2010

			M2	M1	
8163	25673	23368	57299	49042	2010/
8299	25926	23881	58201	49808	
8546	27421	24332	60262	51753	
8873	27402	24435	60809	51838	2011/
8666	26620	27717	63101	54337	
8785	24826	24747	58456	49573	

(4)

2011

M2	
46211	2010/
47666	
49264	
51224	
53051	
55851	
55873	
56388	
56214	
57299	
58201	
60262	
60809	2011/
63101	
58456	
59446	
60436	
61425	
62415	
63405	
64395	

(5)

2011 2010

0			3034	2964	70	2010/
5001	1	5000	2691	2691	0.4	
6001	0.5	6000	3401	3385	16	
11002	2	11000	9126	9040	86	
3000		3000	2845	2819	26	2011/
2000		2000	3127	3093	34	
2000		2000	3369	3322	47	
7000	0	7000	9341	9234	107	

(6)

2011

2010

(7)

1497	2010/
1076	
1066	
1280	2011/
1825	
1913	

(7)

2011

2010

2014	4672	2010/
2049	4532	
2221	4935	
2149	4672	2011/
2050	4859	
2243	4750	

2010

(182)

(8)

(91)

2011

182		91		
%		%		
8.40	110500	7.50	200020	2010/
8.32	200010	7.50	100010	
9.12	200000	7.50	100000	
8.61*	510510	7.50*	400030	
6.88	150010	6.00	200000	2011/
9.06	193000	7.50	200010	
8.63	300000	7.50	300030	
8.19*	643010	7.00*	700040	

* معدل سعر القطع